

FLOW CONTROL VALVES

SR08-01

Flow Regulator, Pressure Compensated, Restrictive Type

Up to 7 gpm (27 l/min) • 6000 psi (420 bar)

Description

A screw-in cartridge, adjustable, pressure compensated, hydraulic flow regulating valve (restrictive type).

Operation

The SR08-01 maintains a constant flow from port 1 to port 2 based on the setting adjustment, regardless of pressure changes downstream of port 2. The flow rate is determined by a fixed control orifice and could be adjusted within a limited range. Reverse flow from port 2 to port 1 is at the value of the fixed control orifice and is non-pressure compensated.

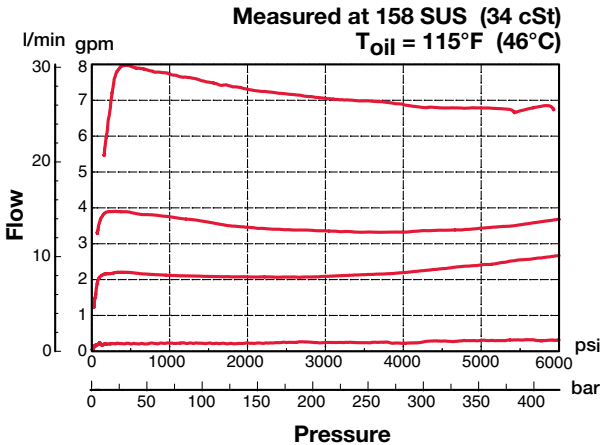
Features

- All external surfaces zinc plated
- Adjustment screw cannot be backed out of the valve
- Excellent stability throughout flow range
- Reverse flow capability
- Desired setting may be locked down
- Hardened parts to ensure minimal wear and extend service life
- One-piece body maximizes reliability and minimizes the effect of eccentricity
- Aluminum knob option for ease of adjustment
- Industry common cavity

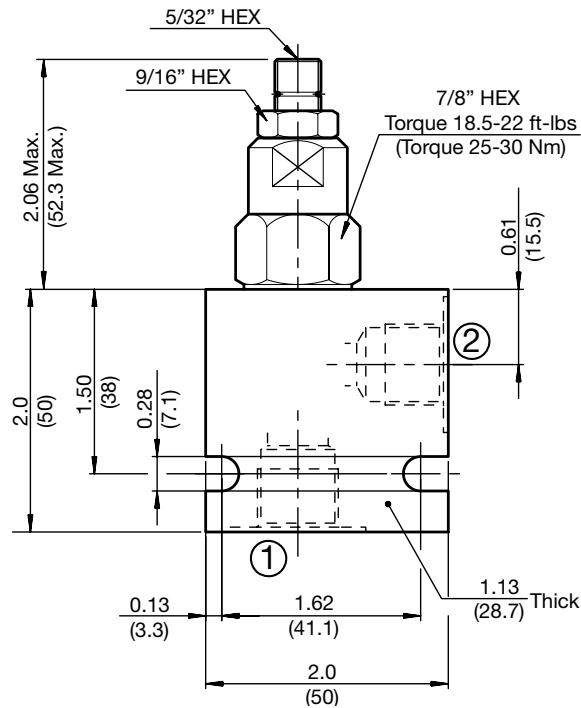
Specifications

Operating Pressure	6000 psi (420 bar)
Max. Operating Pressure, Port 2	3000 psi (210 bar)
Nominal Flow	7 gpm (27 l/min)
Adjustment Torque Required	1.25 lbf.ft at 3000 psi (1.7Nm at 210 bar) 2.21lbf.ft at 5000 psi (3.0 Nm at 350 bar)
Flow Ranges	0.25 - 0.40 gpm (0.95 - 1.50 l/min) 0.30 - 0.53 gpm (1.15 - 2.00 l/min) 0.53 - 0.95 gpm (2.00 - 3.60 l/min) 0.87 - 1.66 gpm (3.30 - 6.30 l/min) 1.42 - 2.55 gpm (5.40 - 9.70 l/min) 2.30 - 4.40 gpm (8.80 - 16.7 l/min) 3.70 - 7.10 gpm (14.0 - 27.0 l/min)
Fluid Operating Temp. Range	-4° to 248°F (-20° to +120°C) (Consult factory for usage at temp. outside range.)
Fluid Compatibility	Mineral-based or synthetics with lubricating properties
Viscosity	50 to 2000 SUS (7.4 to 420 cSt)
Filtration	21/19/16 or cleaner (per ISO 4406). Use with filter rated $\beta_{10} \geq 200$.
Installation	No orientation restrictions
Cavity	FC08-2 (see Line Bodies & Cavities section)
Cavity Tools	Rougher: 02580090 Finisher: 02580091
Cartridge Weight	0.25 Lbs. (0.112 kg)
Cartridge Material	Steel with hardened work surfaces. Zinc-plated exposed surfaces. Anodized aluminum knobs. (option H) Buna N or Viton® o-rings, and PTFE back-up rings.
Seal Kits	Buna-N P/N: 03033920 Viton® P/N: 03051756

Performance

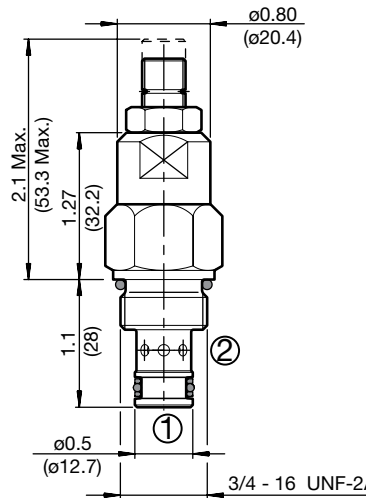


Dimensions

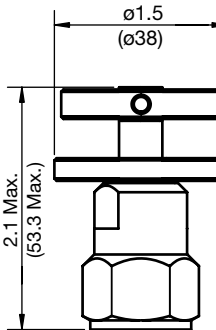


Adjustment Options

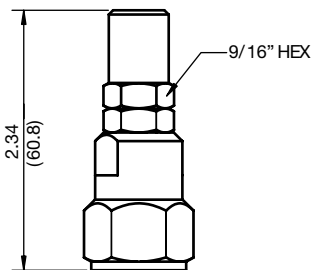
'V' - Allen Head (std)



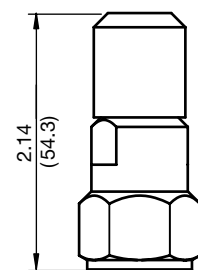
'H' - Hand Knob



'K' - Protective Cap



'F' - Tamper Proof Cap



All measurements in inches (mm).
Subject to technical modifications

Model Code

SR08-01-C-N-1.0 V 0.8

Valve Model

Body & Ports

- C = Cartridge only
- AS6 = SAE-6 ports, aluminum body
- SS6 = SAE-6 ports, steel body

Seals

- N = Buna-N
- V = Viton®

Flow Rate

- 0.5 = 0.25 - 0.40 gpm (0.95 - 1.50 l/min)
- 0.6 = 0.30 - 0.53 gpm (1.15 - 2.00 l/min)
- 1.0 = 0.53 - 0.95 gpm (2.00 - 3.60 l/min)
- 1.8 = 0.87 - 1.66 gpm (3.30 - 6.30 l/min)
- 2.8 = 1.42 - 2.55 gpm (5.40 - 9.70 l/min)
- 4.8 = 2.30 - 4.40 gpm (8.80 - 16.7 l/min)
- 7.9 = 3.70 - 7.10 gpm (14.0 - 27.0 l/min)

Adjustment Options

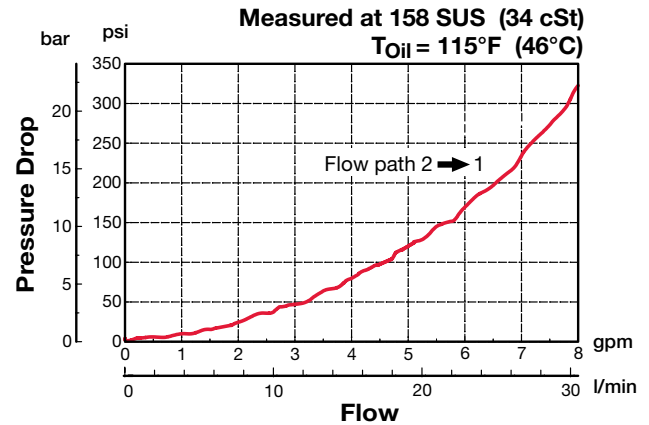
- F = Factory pre-set, non-adjustable
(must specify setting below)
- H = Knurled Hand Knob
- K = Allen Head (HEX 5/32") w/ cover cap
- V = Allen Head (HEX 5/32")

Setting

- blank = Set at 50% of maximum flow for the range
- xxx = flow rate in gpm

Example: 0.8 = 0.8 psi

Performance



Standard Line Bodies*

Code	Part No	Material	Pressure Rating	Weight
FH082-AS6	03011409	Aluminum, anodized	3500 psi (245 bar)	0.34 lb (0.15 kg)
FH082-SS6	00560917	Steel, Zinc plated	6000 psi (420 bar)	1.00 lb (0.45 kg)

*Please refer to Line Bodies & Cavities section for details